

GRADING SYSTEM

100-90 = Excellent
 89-80 = Very good to highly competent
 79-70 = Competent to adequate
 69-60 = Weak to very weak, but passing
 59-40 = Failing work

Advanced Placement course before the cumulative average is derived. Fine Arts courses carry only half weight. Academic tutorials are not calculated in the GPA.

GPA is determined by a cumulative average using courses from a student's freshman through senior years. Three points are added to each Honors and

When converting from a 100-point system to a 4.0 scale, it is mathematically impossible for a student to have above a 4.0 weighted or unweighted. *The highest GPA in the Class of 2009 is 98.*

STATEMENT ON CLASS RANK

FWCD, like many independent schools of comparable caliber, **does not rank its students.** Since admission is highly selective and the tested aptitudes are well above the national average, rank in class cannot be regarded as a valid indication of preparation for college.

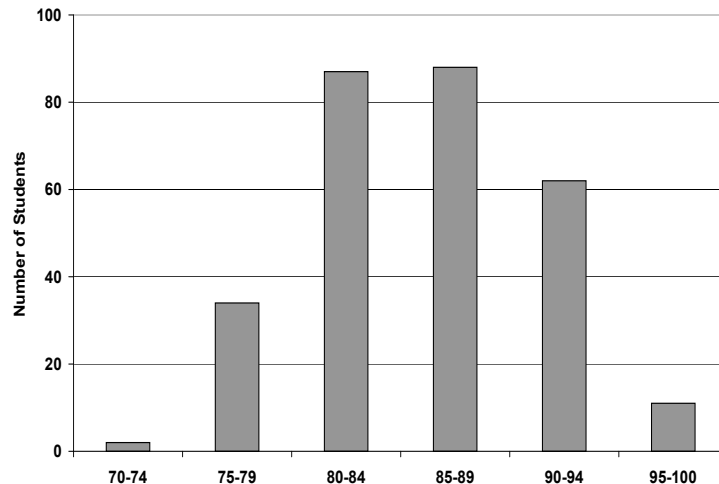
POLICY ON DISCIPLINE

Students and college counselors will work together to address questions about serious disciplinary infractions. Suspensions are reported when asked on college applications.

ADVANCED PLACEMENT COURSES

Art History	French Language
Biology	French Literature
Calculus AB	Latin Literature
Calculus BC	Latin: Vergil
Chemistry	Physics C
Computer Science A	Spanish Language
Computer Science AB	Spanish Literature
English Language	Statistics
English Literature	Studio Art (Drawing, 2-D, 3-D)
Environmental Science	U.S. Government & Politics (semester)
European History	U.S. History

GPA DISTRIBUTION (GRADES 10-12)



ADVANCED PLACEMENT SCORES

	2006	2007	2008
Number of students taking AP Exams	162	157	152
Total AP Exams given	430	362	354
Percentage scoring 3 or higher	83%	78%	75%

- The AP Exam is required for all students in an AP course.
- 45% of the Class of 2008 took three or more AP courses.
- All courses have received AP Course Audit authorization.

COLLEGE MATRICULATION 2006-2008

Traditionally, 100 percent of FWCD graduates attend four-year colleges or universities. Thirty-four percent of the members of the Class of 2008 attended schools in the state of Texas, while 66 percent went out of state. The classes of 2006, 2007 and 2008 matriculated at the colleges and universities listed below. Numbers in parentheses indicate schools where more than one student enrolled.

Appalachian State U	Hendrix C	Texas Wesleyan U	U of Tennessee, Knoxville
Arizona State U	Hofstra U (2)	Trinity U (3)	U of Texas at Arlington (2)
Auburn U (3)	Hollins U	Tulane U (2)	U of Texas at Austin (32)
Austin C	Johns Hopkins U	Tufts U (4)	U of the South—Sewanee (3)
Baylor U (2)	Kansas State U	United States Military Academy (West Point)	U of Tulsa
Birmingham-Southern C	Louisiana State U (2)	U of Alabama (5)	U of Virginia (3)
Boston U (3)	Millsaps C	U of Arkansas (5)	Vanderbilt U (4)
Bowdoin C	New York U (3)	U of California at Berkeley	Vassar C
Brandeis U	Northeastern U (2)	U of California at Los Angeles	Wake Forest U (3)
California Institute of Technology	Northwestern U (2)	U of Chicago (2)	Washington U in St. Louis (2)
Centre C	Penn State U	U of Colorado at Boulder (3)	Wellesley C
College of Charleston (2)	Pepperdine U (2)	U of Denver (2)	Whittier C
Colorado C (2)	Rhodes C (5)	U of Georgia (5)	Yale U
Colorado State U (3)	Rice U (3)	U of Hawaii at Manoa	
Cornell U	Rutgers U (2)	U of Miami (2)	INTERNATIONAL
Davidson C (3)	Saint Louis U (2)	U of Mississippi	Jesus College, Cambridge U
DePauw U (2)	San Diego State U	U of Missouri Columbia (6)	U of British Columbia
Duke U	Skidmore C	U of Notre Dame (2)	U of Toronto
Elon U	Southern Methodist U (6)	U of Oklahoma (12)	
Emory U	Southwestern U (2)	U of Pennsylvania (2)	
Florida Institute of Technology	St. Mary's U of San Antonio	U of Puget Sound (2)	
Furman U	Sweet Briar College	U of Richmond	
George Washington U	Texas A&M U	U of San Diego	
Georgia Institute of Technology	College Station (25)	U of South Carolina	
	Texas A&M U—Galveston	U of Southern California (5)	
	Texas Christian U (34)		
	Texas Tech U (5)		

Fort Worth Country Day has an institutional commitment to the principles of diversity. In that spirit, FWCD does not discriminate in violation of the law on the basis of race, religion, creed, gender, sexual orientation, age, disability or national origin in admission, the administration of its educational policies, financial aid, athletics and other school-administered programs.